



## SmartNode™ 4940

### Multi-Port T1/E1/PRI Enterprise VoIP Media Gateway

*IP-enable your legacy PBX system with the SmartNode™ 4940 PRI VoIP Media Gateway, the cost-effective solution for seamless migration to IP Telephony and Unified Communications.*

#### Up to 120 VoIP calls...

*with four T1/E1/PRI ports and one Gigabit Ethernet port.*

#### Proven Interoperability

*Interoperable with all the major-brand softswitches and IP-PBXs.*

#### Comprehensive Signaling Protocol Support

*Supports SIP, H.323, ISDN, and T1/E1 telephony—plus T.38 and SuperG3 FAX—over TDM/PSTN and IP/Ethernet services simultaneously.*

#### Transparent Telephony Features

*Complex number manipulation and mapping for seamless integration with existing infrastructures, CLIP, CLIR, hold, transfer and much more.*

#### High Precision Clock

*Delivers DECT PBX interoperability with reliable fax performance.*

#### SmartNode™ Awards

- **2010 Internet Telephony Product of the Year:** SmartNode™ 5400
- **2009 Internet Telephony Product of the Year:** SmartNode™ 4400 Series
- **2008 Internet Telephony Product of the Year:** SmartNode™ 4961
- **2007 Internet Telephony Product of the Year:** SmartNode™ S-DTA
- **2006 Internet Telephony Product of the Year:** SmartNode™ 4960
- **2005 Internet Telephony Product of the Year:** SmartNode™ 4630

**A**s enterprises move toward unified communications, the SmartNode™ 4940 provides a smooth transition by either IP-enabling traditional PBX systems for SIP trunking over existing Internet connection, adding PSTN-breakout for number portability, or enabling PSTN access for IP PBX and unified communications systems. Preserve investment in legacy phone equipment while taking the next step toward unified communications with Patton's proven SmartNode™ VoIP solutions.

**With comprehensive signaling** protocol support, the SN4940 supports SIP, H.323, ISDN, and T1/E1 telephony—plus T.38 and SuperG3 FAX—over TDM/PSTN and IP/Ethernet services simultaneously.

**With up to four T1/E1/PRI ports**, connect to any switch, PBX or data network for up to 120 simultaneous calls using SIP, T1, E1 or PRI signaling. The SN4940 also supports all

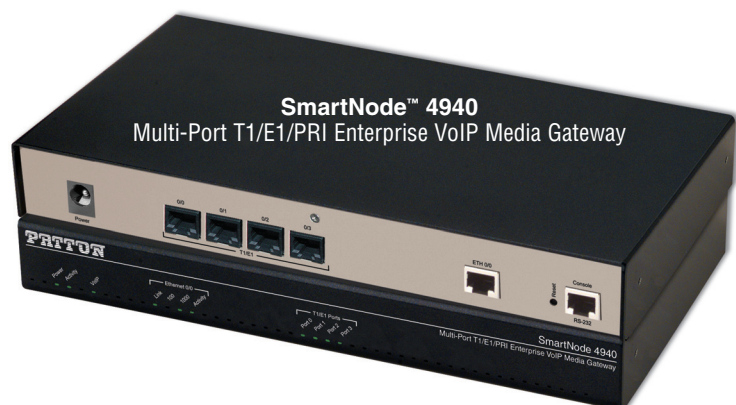
the industry-standard CODECs, delivering toll-quality voice on every call.

**Proven interoperability** with all the major-brand softswitches and IP-PBXs makes it easy for carriers and enterprises to deploy future-proof VoIP systems quickly and profitably. Featuring high reliability and touchless auto-provisioning, tens of thousands of SmartNode™ devices are up-and-running in enterprise and carrier networks worldwide.

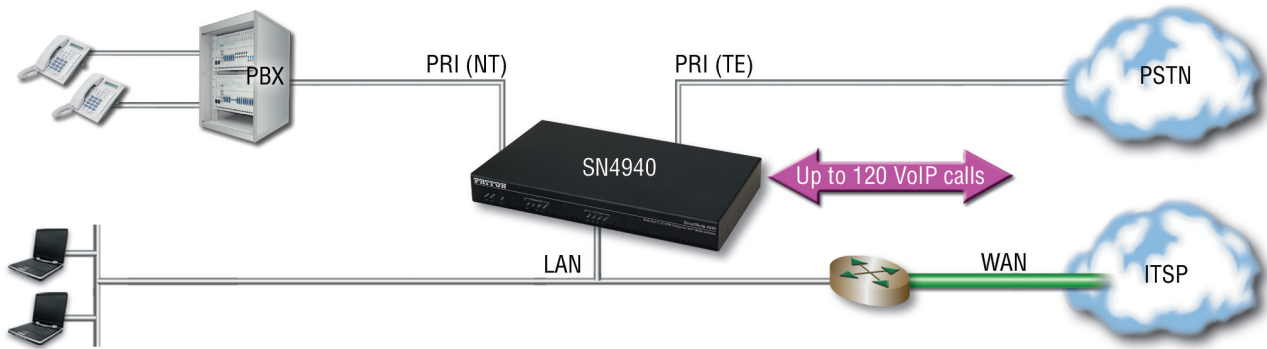
**Ensure business continuity.** By providing PSTN breakout, SmartNode™ ensures voice survivability for reliable enterprise-class communications.

**Patton's unique high-precision clock** enables first-line IP telephony services in demanding DECT PBX environment plus reliable FAX and modem performance.

Visit [www.patton.com](http://www.patton.com) for more information.



## Application Diagram—Convert Legacy PBX to VoIP



## Specifications\*

### Voice Connectivity

Up to four software selectable T1/E1/PRI ports (NE/TE) • Signaling support (ISDN DSS-1, NI-2, Q.SIG, CAS Robbed bit loop and ground start, E&M, immediate, wink, double wink) • ISDN AOC/ECT • ISDN speech, audio & data (Fax Gr 4, UDI 64, RDI64) • ISDN supplementary services • SIPv2 & H.323v4 • CAS protocols: RBS (Loop start, ground start, E&M wink, intermediate, double-wink) and R2/MFC-R2 (Q.400–Q.490 and Configurable country profiles)

### Voice Processing

Codec G.711 a-law/mu-law, G.723, G.729ab, G.726, G727, T.38 fax relay (9.6 k, 14.4 k) • G.711 transparent fax and bypass • 128 ms echo cancellation

### Call Routing and Services

Regular expression call routing and manipulation • number blocking • short-dialing • digit collection, distribution and hunt groups

### Data Interfaces

One 10/100/1000 TX Ethernet Port • Autosensing • Auto-MDI • Full-duplex fragmentation

### Management

Web/HTTP, CLI with local console & remote Telnet access • TFTP configuration & firmware loading • SNMP MIB II and product MIB • Secure auto provisioning for both firmware & unit/subscriber configuration • Built-in diagnostic tools (trace, debug, call generator)

### Power & Packaging

Desktop metal chassis

**Dimensions:** 11.0W x 1.5H x 7.0 D in. (28.0W x 3.9H x 18.0D cm)

**Weight:** < 30 oz (850g)

**External Power:** 100–240VAC (50/60 Hz)

**Power Consumption:** < 15W

### Operating Environment

**Temp:** 32 to 104°F (0 to 40°C)

**Humidity:** up to 90%, non-condensing

### Compliance

EMC: EN55022 and EN5502 • Safety: EN 60950 • CE • FCC Part 15 Class A; Part 68; CS-03

\* Specifications subject to change without notice.

## Ordering Info

### SN4940 T1/E1/PRI VoIP Gateway: Hi-Capacity, 1 GigEthernet, External UI power

**SN4940/1E15V/EUI:** 1 T1/E1/PRI, 15 VoIP channels, upgradeable to 30 calls

**SN4940/1E24V/EUI:** 1 T1/E1/PRI, 24 VoIP channels, upgradeable to 30 calls

**SN4940/1E30V/EUI:** 1 T1/E1/PRI, 30 VoIP Channels, non-upgradeable

**SN4940/4E120V/EUI:** 4 T1/E1/PRI, 120 VoIP channels, non-upgradeable

**SN4940/4E15V/EUI:** 4 T1/E1/PRI, 15 VoIP channels, field upgradeable to 60 channels

**SN4940/4E24V/EUI:** 4 T1/E1/PRI, 24 VoIP channels, field upgradeable to 60 channels

**SN4940/4E30V/EUI:** 4 T1/E1/PRI, 30 VoIP channels, field upgradeable to 60 channels

**SN4940/4E48V/EUI:** 4 T1/E1/PRI, 48 VoIP channels, field upgradeable to 60 channels

**SN4940/4E60V/EUI:** 4 T1/E1/PRI, 60 VoIP channels, non-upgradeable

**SN4940/4E96V/EUI:** 4 T1/E1/PRI, 96 VoIP channels, field upgradeable to 120 channels

### Options & Accessories

**SNSW-49V6:** 6 channel Voice Upgrade Key for SN4960 VoIP IADs. Software expansion for additional voice channels.

**SNSW-VPN2:** Software option for IPsec VPN, including DES/3DES and AES encryption, IKE and Voice-Over-VPN

**SNSW-QSIG2:** Support for ISDN Q.SIG.

**Note:** For complete ordering list, contact [sales@patton.com](mailto:sales@patton.com)

\*For High-Precision option: use SN4941 in SKU (ex: SN4941/4E30V/EUI)

PE-Inalp Networks Private Ltd

An Associate of  
**PATTON**  
Electronics Co., USA

07MSN4940-DS4

Patton is a registered trademark and the terms SmartNode, DownStreamQoS, and SessionRouter are trademarks of Patton Electronics Company in the United States and other countries.

Old No. 14 and New No.6,  
Brahadambal Road,  
Nungambakkam High Road  
Chennai: 600 034, India  
Phone **+91 44 45490395/6/7**  
Fax **+91 44 4549.0394**  
Email **sales@patton.co.in**  
Web **www.patton.co.in**

Patton-Inalp Networks AG

**PATTON**  
inalp networks

Meriedweg 7  
CH-3172 Niederwangen  
Switzerland  
Phone **+41 (31) 985 25 25**  
Fax **+41 (31) 985 25 26**  
E-mail **sales@inalp.com**  
Web **www.inalp.com**

Patton Electronics Co.

**PE PATTON**  
Electronics Co.

7622 Rickenbacker Drive  
Gaithersburg, Maryland 20879  
USA  
Phone **+1 301 975 1000**  
Fax **+1 301 869 9293**  
E-mail **sales@patton.com**  
Web **www.patton.com**