



# Sophos Web Appliances

Advanced web malware protection, URL filtering and content control in a Secure Web Gateway appliance

- ▶ Protect users from new zero-day threats
- ▶ Keep web malware and fake antivirus out of your network
- ▶ Get up and running with an effective web filtering policy with just a few clicks
- ▶ Easily accommodate user requests and custom policies
- ▶ Satisfy your stakeholders with rich, clean, scheduled reports
- ▶ Manage multiple appliances as if they were one
- ▶ Extend protection to offsite users easily with our Endpoint
- ▶ Never deal with updates or upgrades again
- ▶ Support web access on mobile devices, shared systems and for guests
- ▶ Take advantage of our advanced replacement warranty, if you need it

Our Secure Web Gateway appliance blocks even the most advanced web malware and fake antivirus right at the source. Whether it's Twitter for PR, Facebook for CR, or LinkedIn for HR, you can give people safe, productive access to the tools they need to do their jobs. That's because we make it easy for you to enforce acceptable internet use policies and protect your organization from the latest web threats.

## What you get:

- ▶ Protect against new zero-day threats with our advanced web malware scanning
- ▶ Block access to millions of infected sites with reputation filtering
- ▶ Simplify custom URL filtering policies for different users and groups with a simple wizard
- ▶ Enforce compliance by blocking anonymizing proxies
- ▶ Eliminate blind spots with HTTPS filtering that scans SSL encrypted traffic
- ▶ Protect users everywhere, on the network or off, when you combine a web appliance with our Endpoint
- ▶ Support mobile devices, guest access and shared workstations easily
- ▶ Manage and report across multiple locations and up to 15,000 users—from a single appliance
- ▶ Provide guaranteed protection with our remote monitoring of hardware, software, traffic and updates
- ▶ Get included automatic upgrades, 24-hour technical support and a three-year advance replacement hardware warranty

## Try it now for free

Register for a free 30-day evaluation at [sophos.com](http://sophos.com).

## Secure your web gateway—effectively and simply

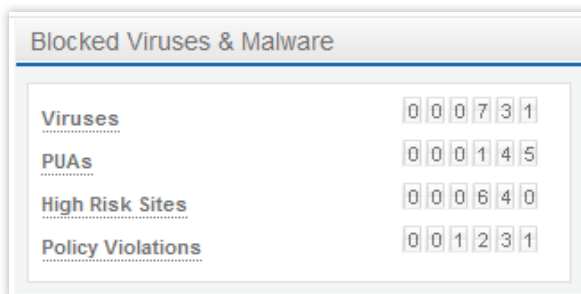
70% of the websites hosting malware are legitimate sites compromised by hackers. That means traditional reputation filtering isn't enough. We solve this problem with a three stage filter that guards you against modern web threats.

**URL filtering** provides that essential foundation for preventing your users from visiting malicious, risky and inappropriate sites. On top of that, we add reputation risk classification data to block risky sites across all categories.

**Advanced web malware scanning** blocks threats using real-time content reassembly with JavaScript emulation and behavioural analysis to identify and stop malicious code at the gateway before it's passed to the browser. It catches even the most advanced zero-day threats without latency or performance impacts.

**Content control** includes policy options that you deploy with a few clicks. You have control over file types; potentially unwanted applications (PUAs); malware attempts to call home and attempts to post sensitive data to sites such as webmail, forums and blogs.

**Advanced Web Malware Scanning** monitors all web traffic at the gateway using advanced techniques proven to catch even the most advanced and complex zero-day threats. Our real-time content reassembly with Javascript emulation and behavioral analysis keeps your network malware free.



## Cover your blind spots with our advanced technology

Our Secure Web Gateway goes above and beyond your typical web defense by scanning encrypted traffic, looking for rogue users and identifying infected machines on your network.

**HTTPS Scanning** is no problem—we scan encrypted HTTPS traffic for malware and inappropriate content, just like normal unencrypted traffic. And we'll warn you if a certificate looks suspicious. With up to 30% of all web traffic now encrypted via SSL, you'll be happy to know we've got this covered.

**Anonymizing proxies** are popular amongst rogue users for bypassing your web filtering policy. So you'll be happy to know we've got that covered as well. We have unique technology that dynamically identifies signs of proxy use to stop violators in their tracks.

**Call Home detection** identifies infected machines on your network that attempt to call home to download more malware, steal your data, participate in a botnet or worse. Easily find infected machines and clean them up before they cause any damage.

**Extend your policy and protection** to offsite users, mobile devices and more. Our flexible authentication options, a customizable captive portal login, and our Endpoint integration provides the tools you need to keep users safe on the web in today's mobile world.

## Save time with our simplified management

We've gone to great lengths to simplify your job—managing web security has never been easier.

**Instant insights** come from our real-time dashboard and rich reporting. Monitor a live dashboard view of activity on your network and drill-down into detailed user activity. Tap into a broad selection of clean, clutter-free reports that are easy to understand and share using our automatic scheduled reporting tool.

**Role-based administration** lets you delegate web management duties to a variety of different individuals, each with their own privileges. In addition to full access, we have pre-defined roles for Helpdesk, Policy, Reporting and User Activity.

**Centrally manage** multiple appliances in your head office or across multiple branch offices as if they were one. Our Sophos Management (SM) appliances—the SM2000 and SM5000—make managing up to 50 web appliances as easy as managing a single one. Or consider using our Endpoint for your remote branch office users with a single SM appliance to protect them wherever they happen to be.

## Get peace of mind with our remotely monitored appliances

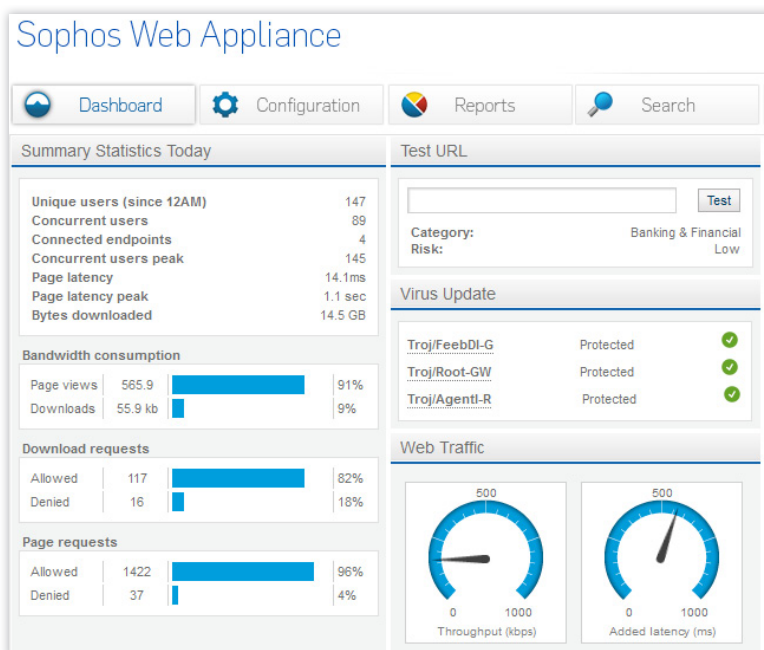
Our Web Appliances combine the best of an on-premise solution with our exclusive managed appliance service.

**Remote monitoring** checks your appliance's vital signs to ensure that everything is running as it should. If we see something out of the ordinary, we alert you before it becomes a problem.

**Automated maintenance** frees up your time. We provide automatic updates and upgrades, meaning you never have to worry about applying a patch or keeping your system up to date, ever again.

**24-hour technical support** from our local experts comes standard. And your license also includes all our updates and upgrades for new software releases, so you'll always have the latest and greatest protection and features at your disposal.

**Web-based management console** Our three-clicks-to-anywhere management console gets you to any action you want to perform, fast.





Appliance Models	WS100	WS500	WS1100	WS5000	SM2000	SM5000
Recommended users	Up to 100	Up to 400	Up to 1200	Up to 3000	Up to 2000	Up to 15,000
Concurrent users	40-80	100-200	300-600	1000-2000	N/A	N/A
Processor	ULV Dual core	Dual core	Quad core	Dual Hexa-Core	Quad core	Quad core
Hard Drive	250 GB SATA	250 GB SATA	1TB SATA	4x 1TB SATA (RAID 10)	1TB SATA	4x 1TB SATA (RAID 10)
Power Supply	200W 100/240V	260W 100/240V	260W 100/240V	Dual Redundant hot-swap 460W 100/240V	260W 100/240V	Dual Redundant hot-swap 460W 100/240V
Dimensions	17 x 1.7 x 9.8 in (427 x 43 x 249 mm)	17 x 1.7 x 14.0 in (427 x 43 x 356 mm)	17 x 1.7 x 14.0 in (427 x 43 x 356 mm)	17 x 1.7 x 25.6 in (432 x 43 x 650 mm)	17 x 1.7 x 14.0 in (427 x 43 x 356 mm)	17 x 1.7 x 25.6 in (432 x 43 x 650 mm)
Weight	10 lbs/4.5 Kg	26 lbs/11.8 Kg	26 lbs/11.8 Kg	45 lbs/20.5 Kg	26 lbs/11.8 Kg	45 lbs/20.5 Kg

## Features

- ▶ Advanced web threat protection
- ▶ Protection from malicious sites
- ▶ Productivity management
- ▶ Web 2.0 controls
- ▶ HTTPS scanning
- ▶ Anonymizing proxy protection
- ▶ Web-based management console and reporting
- ▶ Role-based administration
- ▶ Offsite user protection (when using our Endpoint)
- ▶ System alerting and notification
- ▶ 24/7 support

## Installation

- 1U rack mounted
- Also available as a VMware virtual appliance

## Deployment

- Explicit proxy, Web Cache Communication Protocol (WCCP), Transparent (router redirect or network bridge mode)
- Microsoft Active Directory and Novell eDirectory integration support (eDirectory supported on Gateway policies only—not compatible with Web in Endpoint)

## Regulatory and safety certifications

UL, CE, FCC, VCCI, C-Tick, TÜV-GS, SABS, RoHS, WEEE

## Hardware warranty

Up to three-year advance replacement (subject to valid software licensing)

## Try it now for free

Register for a free 30-day evaluation at [sophos.com](http://sophos.com).

United Kingdom Sales:  
Tel: +44 (0)8447 671131  
Email: [sales@sophos.com](mailto:sales@sophos.com)

North American Sales:  
Toll Free: 1-866-866-2802  
Email: [nasales@sophos.com](mailto:nasales@sophos.com)

Boston, USA | Oxford, UK  
© Copyright 2011. Sophos Ltd. All rights reserved.  
All trademarks are the property of their respective owners.

Sophos Data Sheet 11.11v1.dNA

**SOPHOS**